

Big Brothers Big Sisters.[®] OF NORTHWEST MONTANA

ANNUAL REPORT 2019-2020



WHY WE EXIST

For most of the youth that we serve, life contains more uncertainty and more change than any of us would deem healthy. During a pandemic, challenges and divides have deepened, and in recent history there has never been a greater need for our kids to feel and know kindness, care, and consistency.

Our mission is to defend the potential that exists inside of every child.

WHY WE EXIST...

FROM THE LITTLES PERSPECTIVE

"I like that my Big uses kind words with me."

This quote says it all. Our Littles crave kindness, attention, and dedicated time with adults.

"I like that I can be a kid."

Many of our Littles are asked to carry responsibilities that belie their age. This Little expresses her appreciation for having the time and space simply to be a kid.

"It saved me."

We often hear from Littles - who are now well into adulthood - who share that they are still connected to their Big and that this relationship was transformative and vital as a child.



OUR LITTLES

80-20 is the Flathead-Missoula County split for our Littles and Bigs
70% of our Littles identify as White or Caucasian:
4% as Black: 4% as American Indian: 2% as Hawaiian: 2% as Asian:
18% as Multi-Race

OUR LITTLES

51% of our Littles identify as Male: 45% as Female:
4% as non-gender binary
60% of our Littles live in households that report annual income of less than \$30,000

OUR LITTLES

Most of our Littles live with a single parent/guardian and many live with a guardian who is not a biological parent
Many of our Littles live in families where incarceration is prevalent

2019-2020 AT A GLANCE

Total annual revenue
\$305,000

Individuals Served
150

Counties Served
Flathead & Missoula

Programs Added
**Center for Restorative
Youth Justice (CRYJ)
Site-Based Plus**



OUR PROGRAMS

COMMUNITY BASED - The majority of our Bigs meet with their Littles for 8-12 hours each month engaging in activities of their choosing in the community.

LUNCH PAIL PALS - We are partnering with 5 school districts to provide 4 hours of on-campus mentoring each month per elementary or m.s. student. Some these mentors are high school students

CRYJ - This year we created a partnership with CRYJ for which we provide adult mentors to support juveniles working through this diversion program.

Site Based Plus - For the Lunch Pail Pals who would like to have time off-campus and outside of school, these matches meet up to one time per month out in the community.

CHANGES THIS YEAR

The **BIG** change is that we added Missoula County to our service area. In doing so we added a full-time staff member there and began to partner with schools, foundations, businesses, and local government.

To better reflect the area that we serve, and to signal that we are one organization covering a larger part of Montana, we changed our organization's name to BBBS NW Montana.

Todd Lengacher assumed the role of executive director.

We increased our partnerships with schools.



MENTORING DURING A PANDEMIC

While this pandemic has presented us all with incredible challenges, we have also found opportunity. Here are a few ways that we have responded:

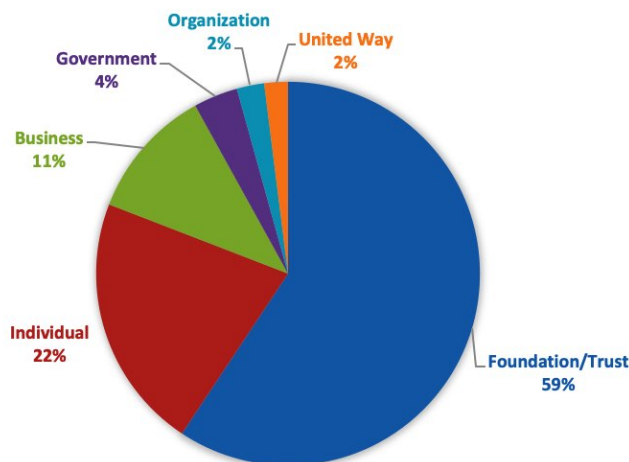
- ☒ We modified protocols to allow for more remote and virtual engagement.
- ☒ We partnered with the Whitefish Community Foundation, The Bookshelf (Kalispell) and Imagination Station (Flathead & Missoula) to provide our Littles with learning materials and STEAM projects and books.
- ☒ During the stay-at-home order we surprised our families with Friday pizza dinners at their homes.
- ☒ We created communication and mentoring opportunities for our Lunch Pail Pal matches while school were closed.

FUNDING BY THE NUMBERS

We increased foundation funding by 288% over last year.

We increased individual donations by 230% over last year.

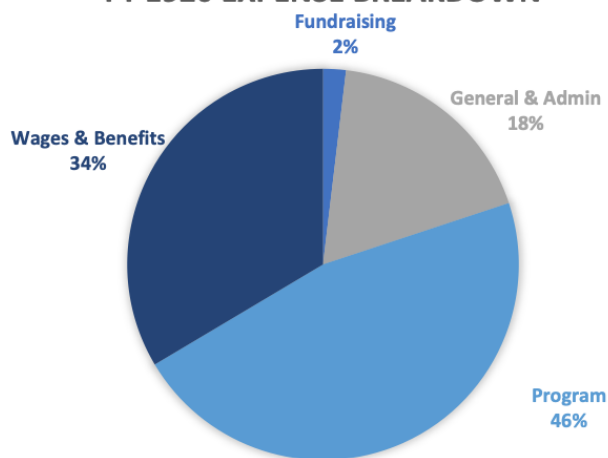
FY 2019-2020 DONATIONS



HOW WE SPEND THOSE FUNDS

Note: Wage & Benefit number can also be seen as Program as our primary program is one of supporting relationships.

FY 1920 EXPENSE BREAKDOWN



WHAT NEXT?

We will continue our commitment to building a robust foundation that supports a healthy and best-practices organization.

We will continue to build-out our program in Missoula, including increasing partnerships, developing events, and attracting area board members.

We will continue to grow our Big and Little base while ensuring the quality of existing matches.

We will be strategic in crafting a more diverse and sustainable revenue stream.

We will build more partnerships that will allow us to support our Littles and families in new ways.

We will actively contribute to the growth and health of our communities.

